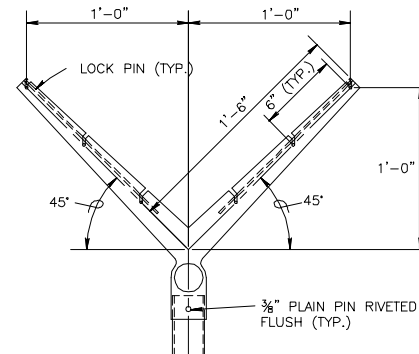


CHAIN-LINK SECURITY FENCE DETAIL

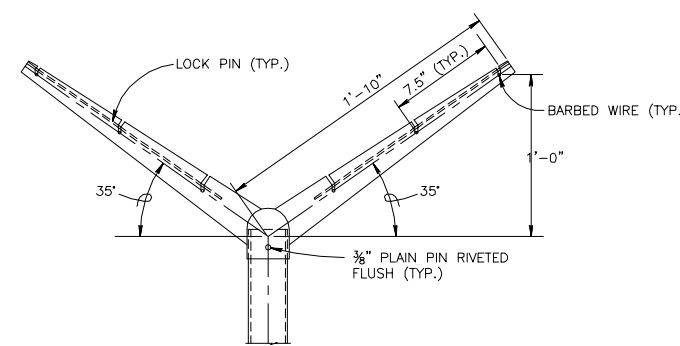
NO SCALE



LINE POST

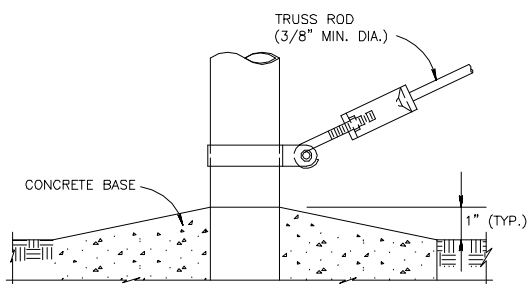
EXTENSION ARM DETAILS

NO SCALE

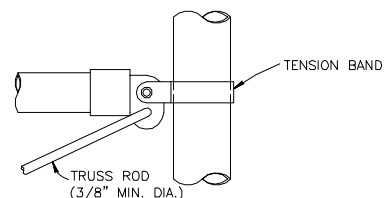


CORNER POST

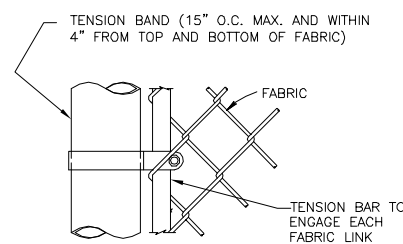
USE AND SECTION	MINIMUM OUTSIDE DIMENSIONS (NOMINAL)		
	FABRIC LESS THAN 72"	FABRIC 72" TO 96"	FABRIC OVER 96"
CORNER, END & PULL POSTS			
TUBULAR - ROUND	2.375" O.D.	2.875" O.D.	4.00" O.D.
LINE POSTS			
TUBULAR - ROUND	1.90" O.D.	2.375" O.D.	2.875" O.D.
BOTTOM & BRACE RAILS			
TUBULAR - ROUND		1.66" O.D.	
TUBULAR - SQUARE		1.50" O.D.	
H-SECTION		1.625" X 1.50"	
C-SECTION (ROLL-FORMED)		1.625" X 1.25"	



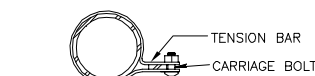
TRUSS ROD AND BAND



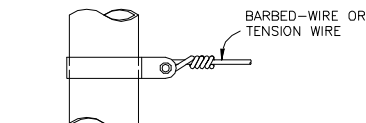
BRACE RAIL CLAMP DETAIL



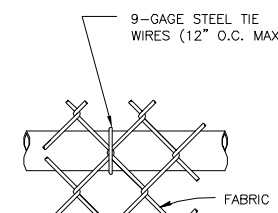
TENSION BAND DETAIL



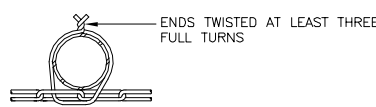
END OR GATE POST DETAIL



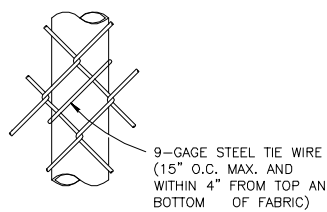
TENSION BAND DETAIL



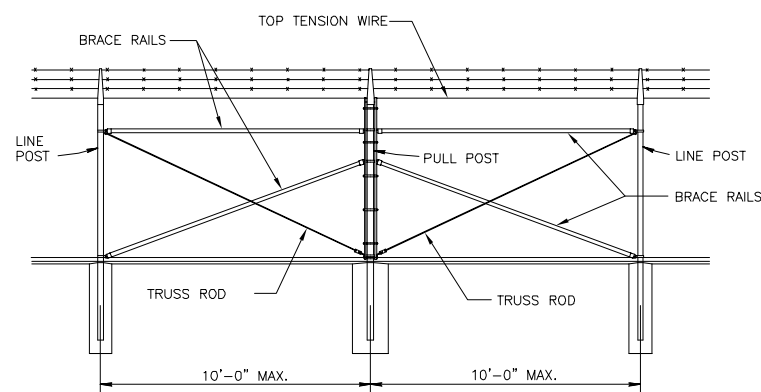
BRACE RAIL ATTACHMENT



LINE POST ATTACHMENTS



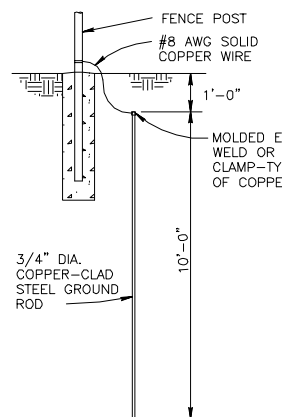
LINE POST ATTACHMENTS



BRACE PANEL DETAIL

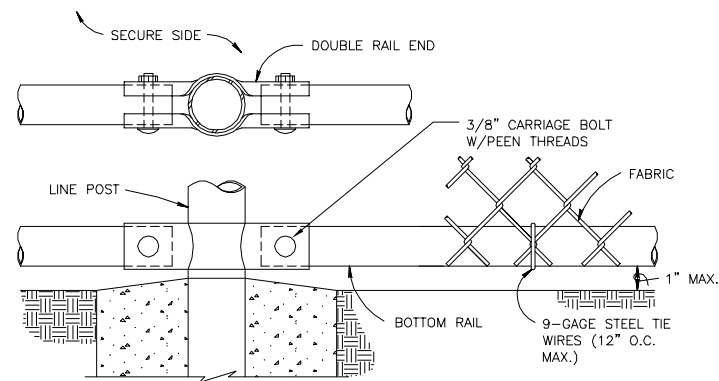
NO SCALE

NOTE: PROVIDE BRACE PANEL WHENEVER STRAIGHT RUNS EXCEED 500 FEET.



GROUNDING DETAIL

NO SCALE



BOTTOM RAIL DETAILS

NO SCALE

NOTES:

1. WIRE TIES, RAILS, POSTS, AND BRACES SHALL BE CONSTRUCTED ON THE SECURE SIDE OF THE FENCE ALIGNMENT. CHAIN-LINK FABRIC SHALL BE PLACED ON THE OPPOSITE SIDE OF THE SECURE AREA.

2. OC-SECTION POSTS SHALL BE INSTALLED SO THAT THE VOID INSIDE THE POST IS COMPLETELY FILLED WITH CONCRETE UP TO THE TOP OF THE FOUNDATION.

4. BOTTOM RAIL SHALL BE ATTACHED TO DOUBLE RAIL ENDS USING 3/8\"/>

FENCE LEGEND:

- TYPE FE5 - CHAIN-LINK FENCE WITHOUT BARBED-WIRE APRON
- TYPE FE6 - CHAIN-LINK FENCE W/BARBED-WIRE ON SINGLE OUTRIGGER
- TYPE FE7 - CHAIN-LINK FENCE W/BARBED-WIRE ON DOUBLE OUTRIGGER
- TYPE FE8 - CHAIN-LINK FENCE W/BARBED-WIRE AND BARBED-TAPE ON DOUBLE OUTRIGGER
- TR - FENCE WITH TOP RAIL AND TENSION WIRE AT BOTTOM
- TBR - FENCE WITH TOP AND BOTTOM RAILS
- TWB - TENSION WIRE TOP AND BOTTOM
- TWBR - FENCE WITH TOP TENSION WIRE AND BOTTOM RAIL
- FINAL NUMBER IS FABRIC WIDTH IN INCHES.

EXAMPLES

FE6-TR-72 - CHAIN-LINK SECURITY FENCE WITH BARBED-WIRE ON SINGLE OUTRIGGER, TOP RAIL, AND 72 INCH FABRIC WIDTH.

FE5-TWB-48 - CHAIN-LINK SECURITY FENCE WITH NO APRON, TOP AND BOTTOM TENSION WIRE, AN

Revisions			
Symbol	Descriptions	Date	Approved
U.S. ARMY ENGINEER DISTRICT CORPS OF ENGINEERS OMAHA, NEBRASKA			
Designed by:	x		x
Drawn by:	x		
Checked by:	x		
Reviewed by:	x		
Submitted by:			
Chief:	x	Section	

STANDARD DETAILS FOR CHAIN-LINK SECURITY FENCES AND FARM STYLE FENCES			
FE7 CHAIN-LINK SECURITY FENCE DETAILS FOR SENSORED FENCE			
Plot Scale Ratio:	1:1	Date:	02/01/02
Design File:	FE7FEN2.DGN	Spec. No.:	DACA 45
Submitted by:	DACA 45	Drawing Code:	STD 872-90-10
Contract No.:	DACA 45		
			05