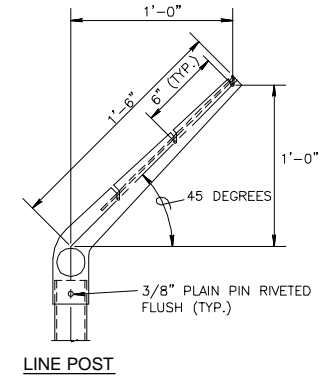
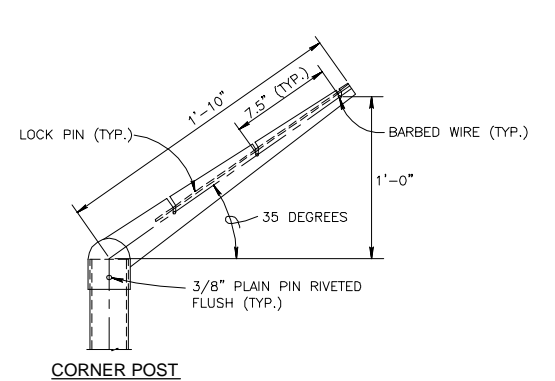


**CHAIN-LINK SECURITY FENCE DETAIL**  
NO SCALE



**LINE POST**  
EXTENSION ARM DETAILS  
NO SCALE



**CORNER POST**

USE AND SECTION	MINIMUM OUTSIDE DIMENSIONS (NOMINAL)		
	FABRIC LESS THAN 72"	FABRIC 72" TO 96"	FABRIC OVER 96"
<b>CORNER, END &amp; PULL POSTS</b>			
TUBULAR - ROUND	2.375" O.D.	2.875" O.D.	4.00" O.D.
TUBULAR - SQUARE	2.00" SQ.	2.50" SQ.	3.00" SQ.
C-SECTION (ROLL-FORMED)	3.50" X 3.50"	3.50" X 3.50"	
<b>LINE POSTS</b>			
TUBULAR - ROUND	1.90" O.D.	2.375" O.D.	2.875" O.D.
H-SECTION	2.25" X 1.70"	2.25" X 1.70"	2.25" X 70"
C-SECTION (ROLL-FORMED)	1.875" X 1.625"	2.25" X 1.70"	
<b>TOP, BOTTOM &amp; BRACE RAILS</b>			
TUBULAR - ROUND		1.66" O.D.	
TUBULAR - SQUARE		1.50" O.D.	
H-SECTION		1.625" X 1.50"	
C-SECTION (ROLL-FORMED)		1.625" X 1.25"	

**NOTES:**

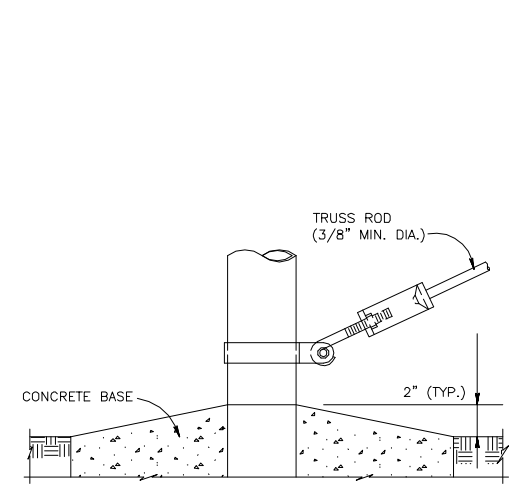
1. DETAILS SHOWN ARE TO CLARIFY REQUIREMENTS AND ARE NOT INTENDED TO LIMIT OTHER TYPES OF FENCE SECTIONS AND METHODS OF INSTALLATION.
2. WIRE TIES, RAILS, POSTS, AND BRACES SHALL BE CONSTRUCTED ON THE SECURE SIDE OF THE FENCE ALIGNMENT. CHAIN-LINK FABRIC SHALL BE PLACED ON THE OPPOSITE SIDE OF THE SECURE AREA.
3. UNLESS SPECIFICALLY SHOWN OR SPECIFIED, ALL FE6 FENCE SHALL HAVE AN APRON EXTENDED OUTWARD FROM THE AREA BEING PROTECTED.
4. C-SECTION POSTS SHALL BE INSTALLED SO THAT THE VOID INSIDE THE POST IS COMPLETELY FILLED WITH CONCRETE UP TO THE TOP OF THE FOUNDATION.

**FENCE LEGEND:**

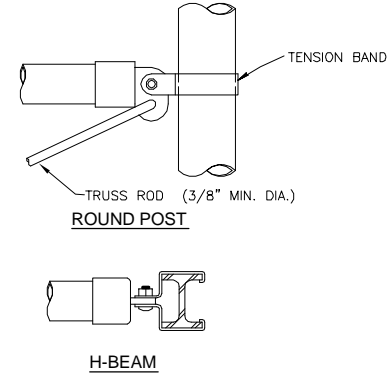
- TYPE FE5 - CHAIN-LINK FENCE WITHOUT BARBED-WIRE APRON
- TYPE FE6 - CHAIN-LINK FENCE W/BARBED-WIRE ON SINGLE OUTRIGGER
- TYPE FE7 - CHAIN-LINK FENCE W/BARBED WIRE ON DOUBLE OUTRIGGER
- TYPE FE8 - CHAIN-LINK FENCE W/BARBED-WIRE AND BARBED-TAPE ON DOUBLE OUTRIGGER
- TR - FENCE WITH TOP RAIL AND TENSION WIRE AT BOTTOM
- TBR - FENCE WITH TOP AND BOTTOM RAILS
- TWB - TENSION WIRE TOP AND BOTTOM
- TWBR - FENCE WITH TOP TENSION WIRE AND BOTTOM RAIL
- FINAL NUMBER IS FABRIC WIDTH IN INCHES.

**EXAMPLES**

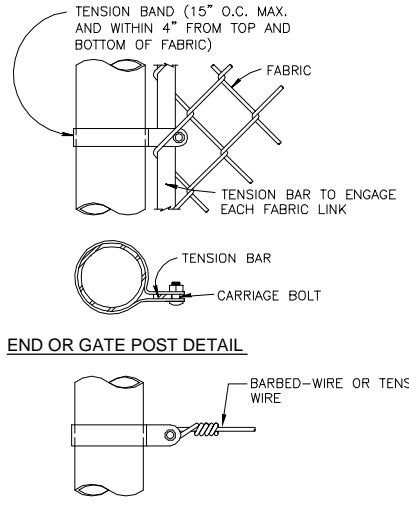
- FE6-TR-72 - CHAIN-LINK SECURITY FENCE WITH BARBED-WIRE ON SINGLE OUTRIGGER, TOP RAIL, AND 72 INCH FABRIC WIDTH.
- FE5-TWB-48 - CHAIN-LINK SECURITY FENCE WITH NO APRON, TOP AND BOTTOM TENSION WIRE, AND 48 INCH FABRIC WIDTH.



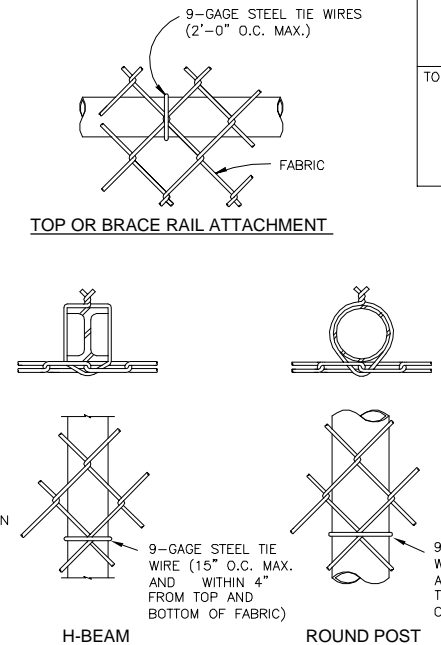
**TRUSS ROD AND BAND**



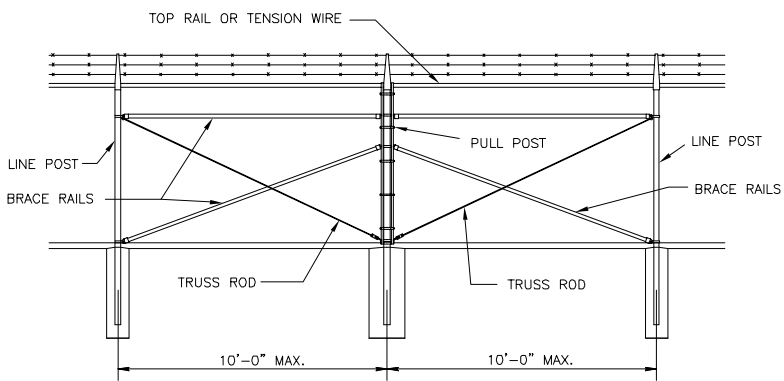
**BRACE RAIL CLAMP DETAILS**



**TENSION BAND DETAIL**

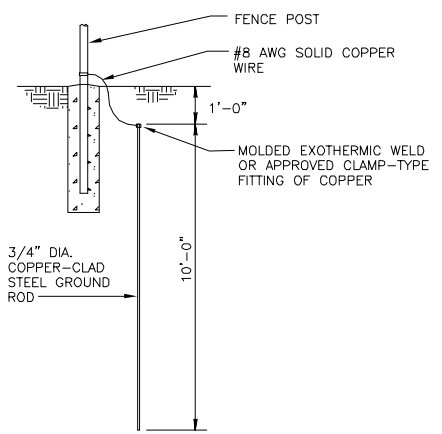


**LINE POST ATTACHMENTS**



**BRACE PANEL DETAIL**  
NO SCALE

**NOTE:**  
PROVIDE BRACE PANEL WHENEVER STRAIGHT RUNS EXCEED 500 FEET.



**GROUNDING DETAIL**  
NO SCALE

**\$\$ - THINK VALUE ENGINEERING - \$\$**

Revisions			
Symbol	Descriptions	Date	Approved

U.S. ARMY ENGINEER DISTRICT  
CORPS OF ENGINEERS  
OMAHA, NEBRASKA

Designed by:	x	<p align="center"><b>STANDARD DETAILS FOR CHAIN-LINK SECURITY FENCES AND FARM STYLE FENCES</b></p> <p align="center"><b>FE6 CHAIN-LINK SECURITY FENCE DETAILS</b></p>	<p align="center">U.S. ARMY ENGINEER DISTRICT CORPS OF ENGINEERS OMAHA, NEBRASKA</p>
Drawn by:	x		
Checked by:	x		
Reviewed by:	x		
Submitted by:	x		
Chief:	x	Plot Scale Ratio: 1:1 Design File: FE6FENCE Spec. No.: DACA 45 Contract No.: DACA 45	Date: 02/01/02 Drawing Code: STD 87-90-03 Sheet reference number: 03