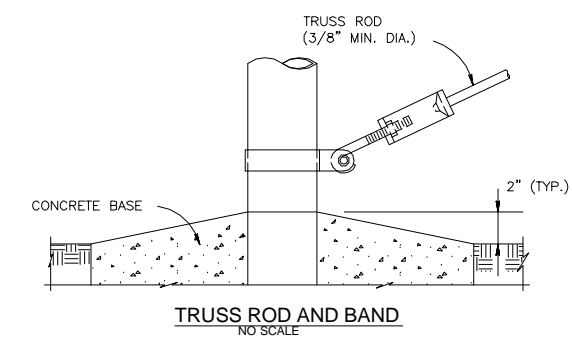
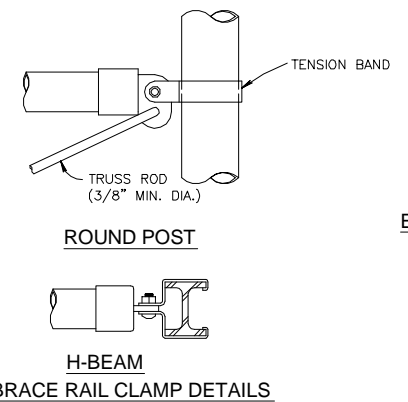


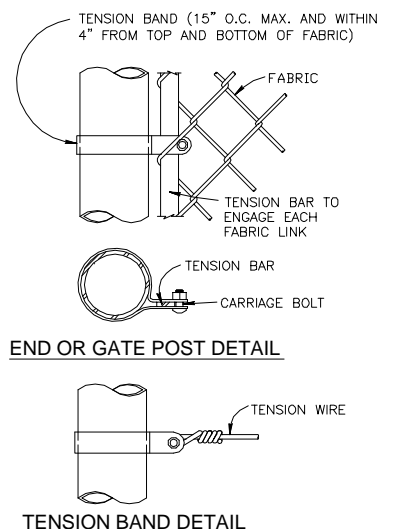
FE5 CHAIN-LINK SECURITY FENCE DETAIL
NO SCALE



TRUSS ROD AND BAND
NO SCALE

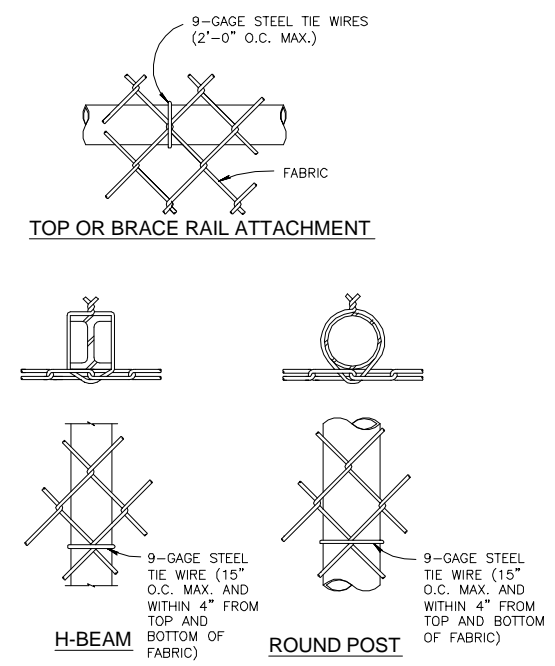


H-BEAM BRACE RAIL CLAMP DETAILS
NO SCALE



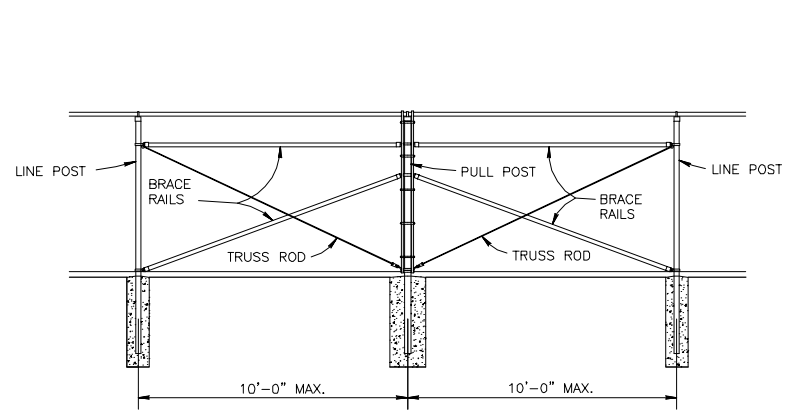
END OR GATE POST DETAIL
NO SCALE

TENSION BAND DETAIL
NO SCALE



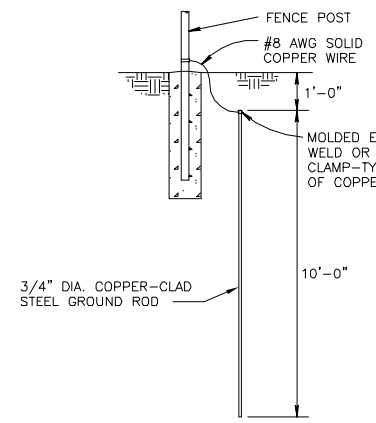
TOP OR BRACE RAIL ATTACHMENT
NO SCALE

LINE POST ATTACHMENTS
NO SCALE



BRACE PANEL DETAIL
NO SCALE

NOTE:
PROVIDE BRACE PANEL
WHENEVER STRAIGHT RUNS
EXCEED 500 FEET.



GROUNDING DETAIL
NO SCALE

USE AND SECTION	STEEL POST SCHEDULE		
	MINIMUM OUTSIDE DIMENSIONS (NOMINAL)		
	FABRIC LESS THAN 72"	FABRIC 72" TO 96"	FABRIC OVER 96"
CORNER, END & PULL POSTS			
TUBULAR - ROUND	2.375" O.D.	2.875" O.D.	4.00" O.D.
TUBULAR - SQUARE	2.00" SQ.	2.50" SQ.	3.00" SQ.
C-SECTION (ROLL-FORMED)	3.50" X 3.50"	3.50" X 3.50"	---
LINE POSTS			
TUBULAR - ROUND	1.90" O.D.	2.375" O.D.	2.875" O.D.
H-SECTION	2.25" X 1.70"	2.25" X 1.70"	2.25" X 1.70"
C-SECTION (ROLL-FORMED)	1.875" X 1.625"	2.25" X 1.70"	---
TOP, BOTTOM & BRACE RAILS			
TUBULAR - ROUND	1.66" O.D.		
TUBULAR - SQUARE	1.50" O.D.		
H-SECTION	1.625" X 1.50"		
C-SECTION (ROLL-FORMED)	1.625" X 1.25"		

NOTES:

1. DETAILS SHOWN ARE TO CLARIFY REQUIREMENTS AND ARE NOT INTENDED TO LIMIT OTHER TYPES OF FENCE SECTIONS AND METHODS OF INSTALLATION.
2. WIRE TIES, RAILS, POSTS, AND BRACES SHALL BE CONSTRUCTED ON THE SECURE SIDE OF THE FENCE ALIGNMENT. CHAIN-LINK FABRIC SHALL BE PLACED ON THE OPPOSITE SIDE OF THE SECURE AREA.
3. C-SECTION POSTS SHALL BE INSTALLED SO THAT THE VOID INSIDE THE POST IS COMPLETELY FILLED WITH CONCRETE UP TO THE TOP OF THE FOUNDATION.

FENCE LEGEND:

- TYPE FE5 - CHAIN-LINK FENCE WITHOUT BARBED-WIRE APRON
 - TYPE FE6 - CHAIN-LINK FENCE W/BARBED-WIRE ON SINGLE OUTRIGGER
 - TYPE FE7 - CHAIN-LINK FENCE W/BARBED-WIRE ON DOUBLE OUTRIGGER
 - TYPE FE8 - CHAIN-LINK FENCE W/BARBED-WIRE AND BARBED-TAPE ON DOUBLE OUTRIGGER
 - TR - FENCE WITH TOP RAIL AND TENSION WIRE AT BOTTOM
 - TBR - FENCE WITH TOP AND BOTTOM RAILS
 - TWB - TENSION WIRE TOP AND BOTTOM
 - TWBR - FENCE WITH TOP TENSION WIRE AND BOTTOM RAIL
- FINAL NUMBER IS FABRIC WIDTH IN INCHES.

EXAMPLES

- FE6-TR-72 - CHAIN-LINK SECURITY FENCE WITH BARBED-WIRE ON SINGLE OUTRIGGER, TOP RAIL, AND 72 INCH FABRIC WIDTH.
- FE5-TWB-48 - CHAIN-LINK SECURITY FENCE WITH NO APRON, TOP AND BOTTOM TENSION WIRE, AND 48 INCH FABRIC WIDTH.

\$\$ - THINK VALUE ENGINEERING - \$\$

Revisions			
Symbol	Descriptions	Date	Approved

U.S. ARMY ENGINEER DISTRICT
CORPS OF ENGINEERS
OMAHA, NEBRASKA

Designed by: X	BASE NAME STANDARD DETAILS FOR CHAIN-LINK SECURITY FENCES AND FARM STYLE FENCES	BASE LOCATION OMAHA, NEBRASKA	
Drawn by: X	FE5 CHAIN-LINK SECURITY FENCE DETAILS		
Checked by: X			
Reviewed by: X			
Submitted by: X	Plot Scale Ratio: Design File: FE5FEN1	Date: 02/01/02	Sheet reference number: 02
Chief: X	Contract No.: DACA 45	Drawing Code: STD 87-90-02	