

SECTION 02834G - PERIMETER SECURITY FENCE**PURPOSE**

This Section is for the perimeter fence for the secure area. For fence inside the secure perimeter, use the standard chain link fences and gates from MASTERSPEC Section 02831.

CHANGES FROM MASTERSPEC:

Note: ASTM A53 is the correct galvanized pipe reference and not the superseded ASTM A120.

FABRIC: Selvage twisted and barbed at both top and bottom. Fabric can not exceed 50mm (2") deflection under 14-kg (30 lb) load. Polyvinyl chloride (PVC) coated and aluminum chain link fences and gates are not acceptable on FBOP projects. Use only galvanized or aluminum coated.

End And Corner Posts: 100mm (4") diameter.

Line (Intermediate) Posts: 73mm (2.875") in diameter.

Top, Bottom And Intermediate Rails And Braces: 42-mm (1.66") diameter.

Gate Posts: Up to 1.8m (6'), 70mm (2.875") pipe
1.8m (6') and over, 100mm (4") pipe.

Hinges: Minimum 2 pair per leaf.

DESIGN GUIDANCE:

LOCATION OF FENCES: Security fences shall be located 6-m (20') apart. Maintain a minimum 30.5-m (100') clear zone between the interior perimeter fence and any building. Any exception to this standard must be approved in writing by the Chief, Design & Construction Branch.

INTERIOR ANGLES: Must be a minimum of 120 degrees.

GROUNDING: Fence fabric shall be grounded at a maximum of 30-m (100') intervals by attaching both fence fabrics at ground level to a 16mm (5/8") diameter, 3-m (10') long copper-clad grounding rod. Drive the rod into the ground between fences leaving 150-mm (6") above grade. Connect the rod above ground to a #8 copper wire running to each fence. At each fence, connect the #8 wire to the fabric with a straight copper cad weld connection. Install at all perimeter security fences.

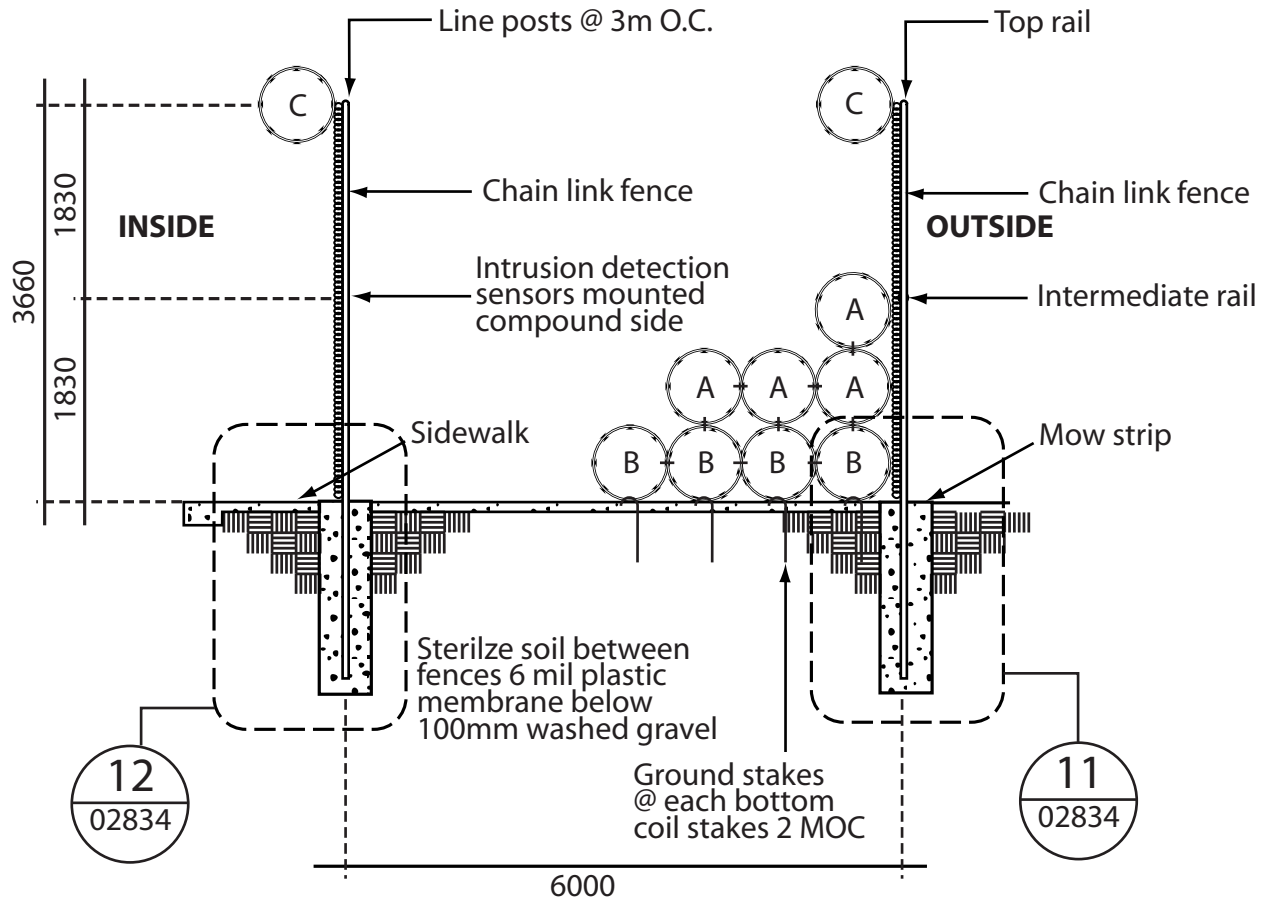
DRAWINGS

The following standard details should be included in the contract documents for the project. The details have been prepared to meet the modular concept of ConDoc for CAD. However, the use of ConDoc is not required for FBOP projects.

SCHEDULE OF DRAWINGS

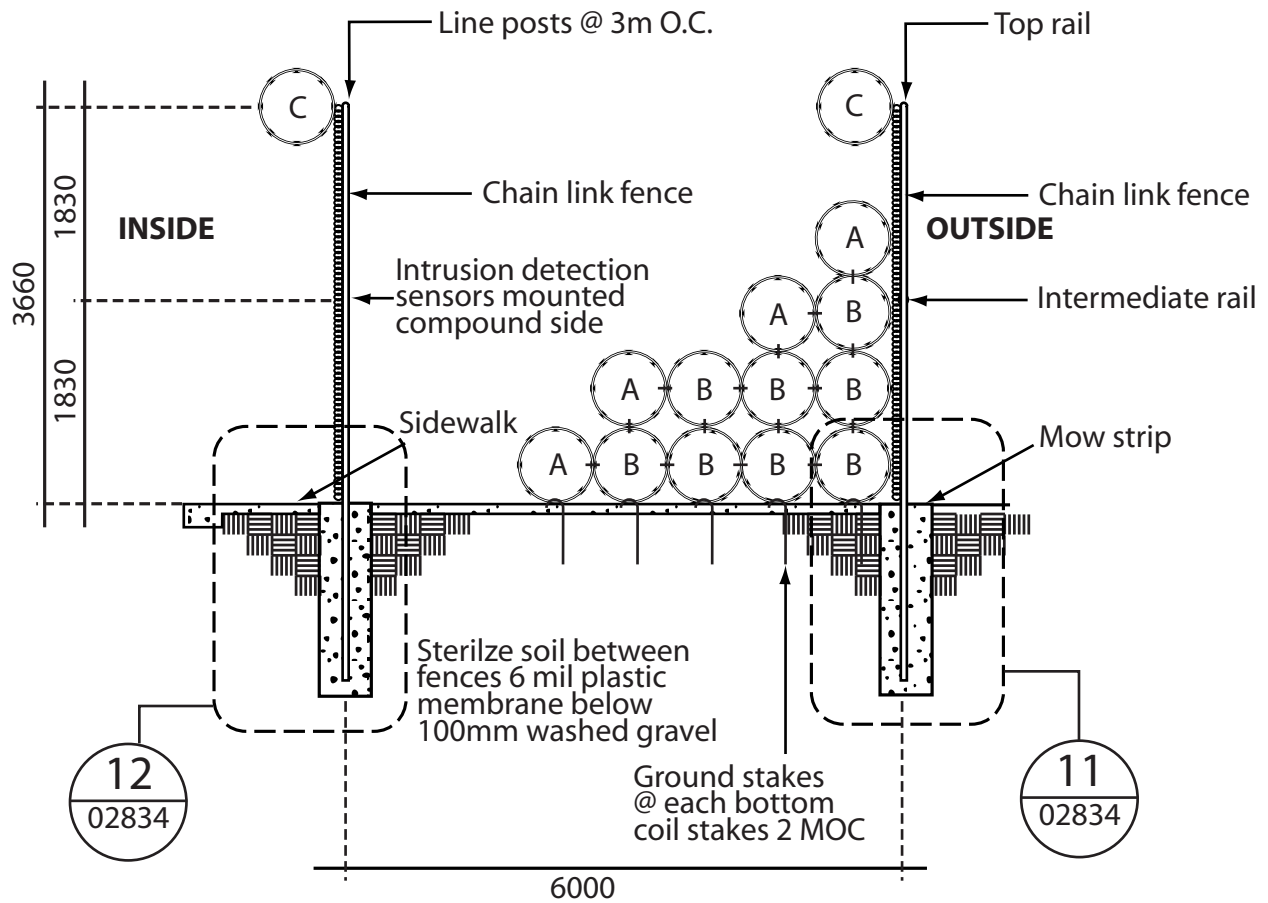
- 1 - 02834 LOW & MEDIUM SECURITY - TYPICAL SECTION/PERIMETER SECURITY FENCE
- 2 - 02834 HIGH SECURITY -TYPICAL SECTION/PERIMRER SECURITY FENCE
- 3 - 02834 CORNER PULL OR END POST
- 4 - 02834 VEHICULAR SALLYPORT PLAN
- 5 - 02834 SLIDING VEHICLE GATE
- 6 - 02834 TYPICAL FENCE SECTION @ VEHICULAR SALLYPORT
- 7 -02834 ANTI-CRASH GATE PLAN
- 8 - 02839 ANTI-CRASH GATE SECTION
- 9 - 02834 LOCK PIN DETAIL
- 10 - 02834 GATE ARM MOUNTING DETAIL
- 11 - 02834 ENLARGED DETAIL OF [1 -02834]
- 12 - 02834 ENLARGED DETAIL OF [2 028341]
- 13 - 02834 TYPICAL FENCE SECTION @ VEHICULAR SALLYPORT
- 14 - 02834 TYPICAL FENCE SECTION @ VEHICULAR SALLYPORT

A - 750mm Diameter barbed tape non-reinforced
 B - 750mm Diameter barbed tape wire-reinforced
 C - 750mm Diameter Detainer Hook Barb

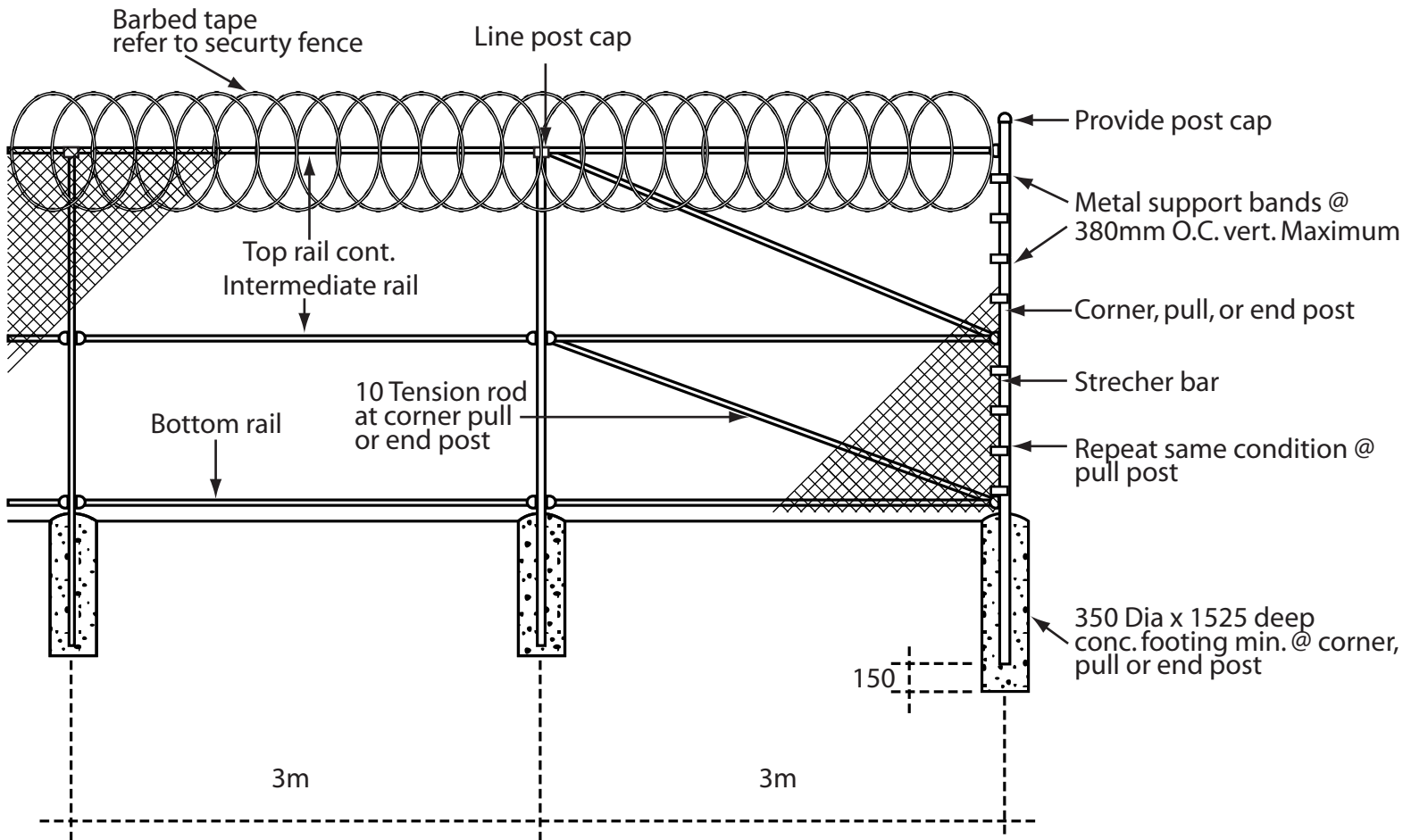


1 LOW + MEDIUM SECURITY - TYPICAL SECTION PERIMETER SECURITY FENCE
 02834

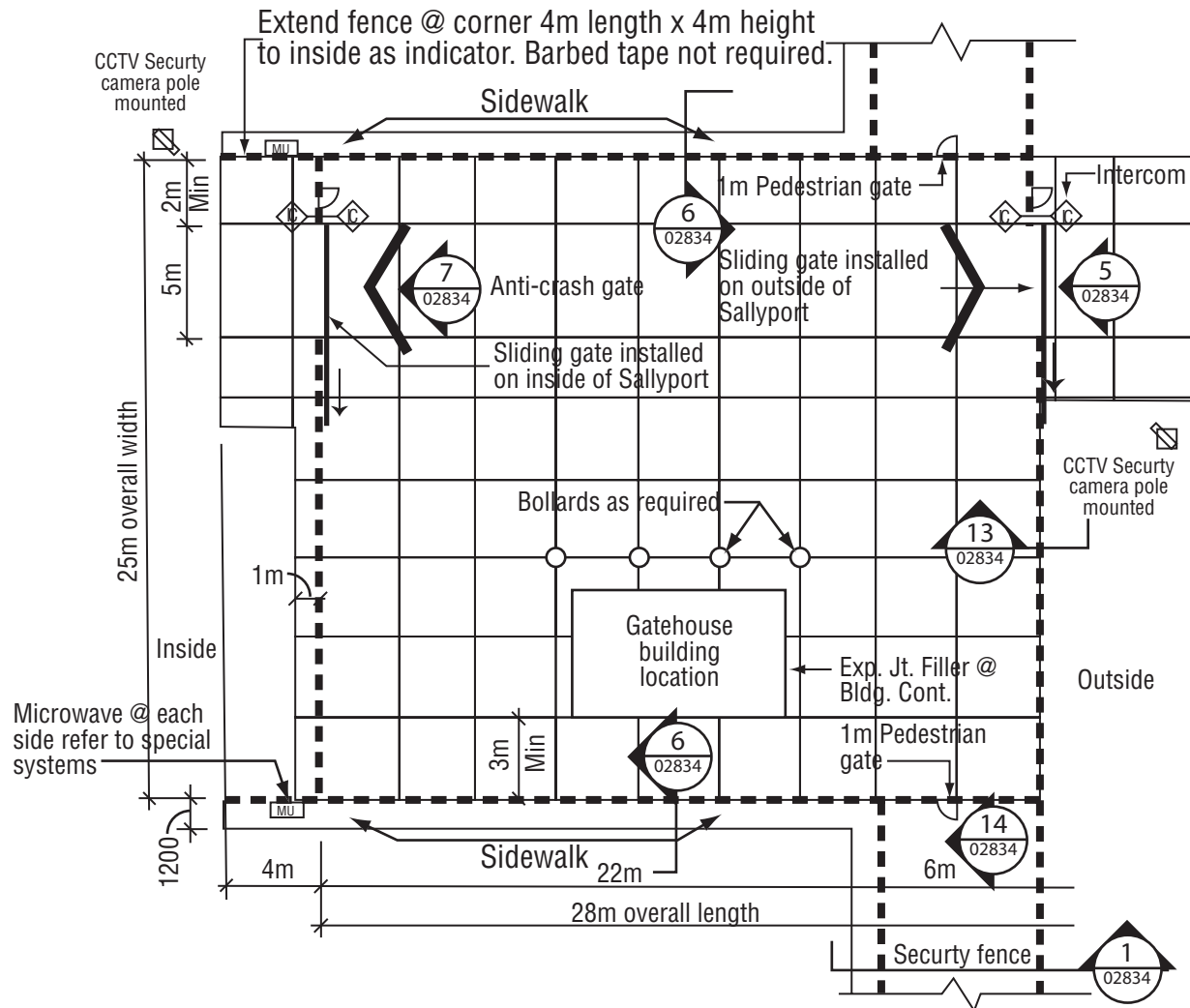
A - 750mm Diameter barbed tape non-reinforced
 B - 750mm Diameter barbed tape wire-reinforced
 C - 750mm Diameter Detainer Hook Barb



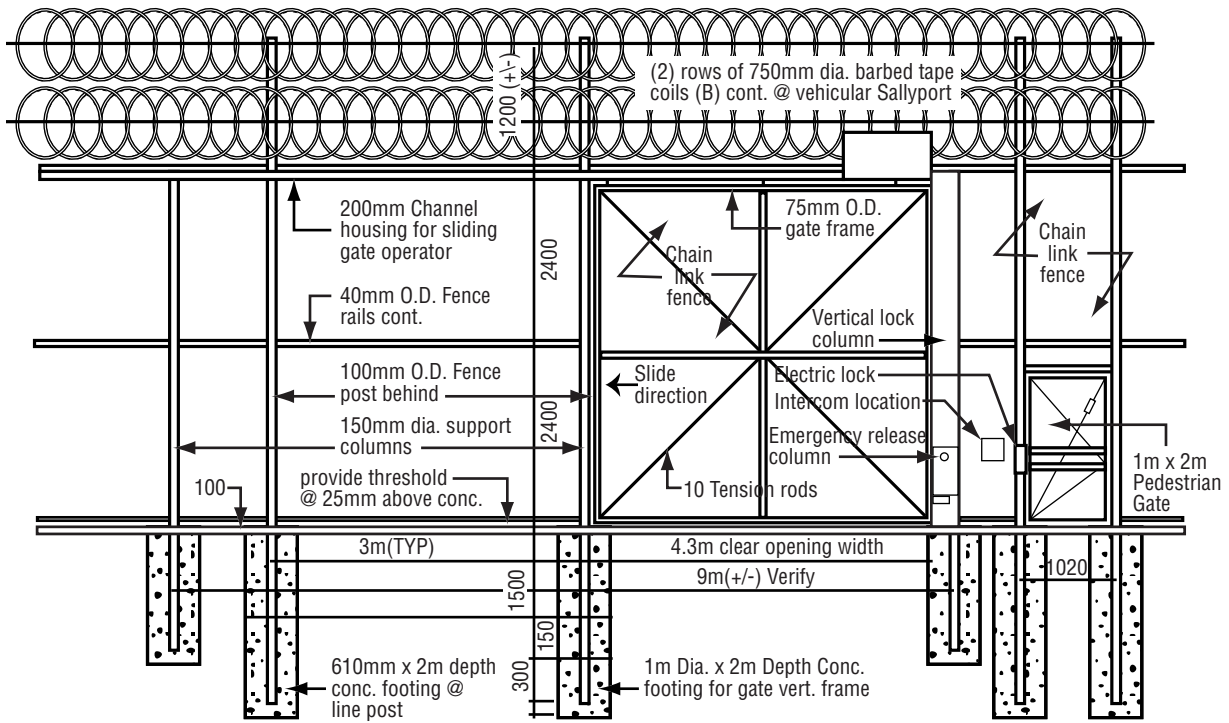
2 HIGH SECURITY - TYPICAL SECTION
 02834 PERIMETER SECURITY FENCE



3
02834 **CORNER, PULL OR END POST**

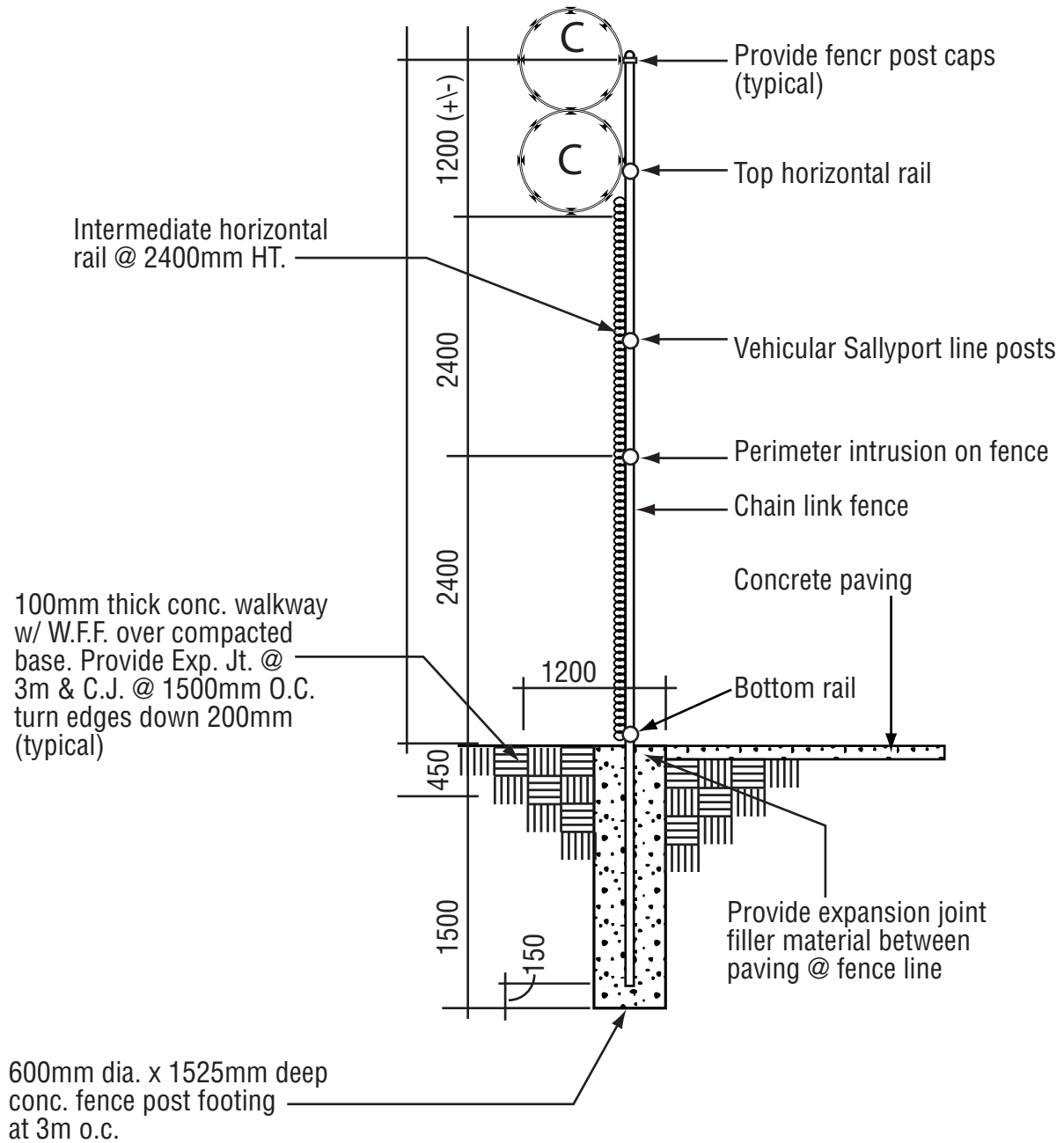


4
02834 **VEHICULAR SALLYPORT PLAN**

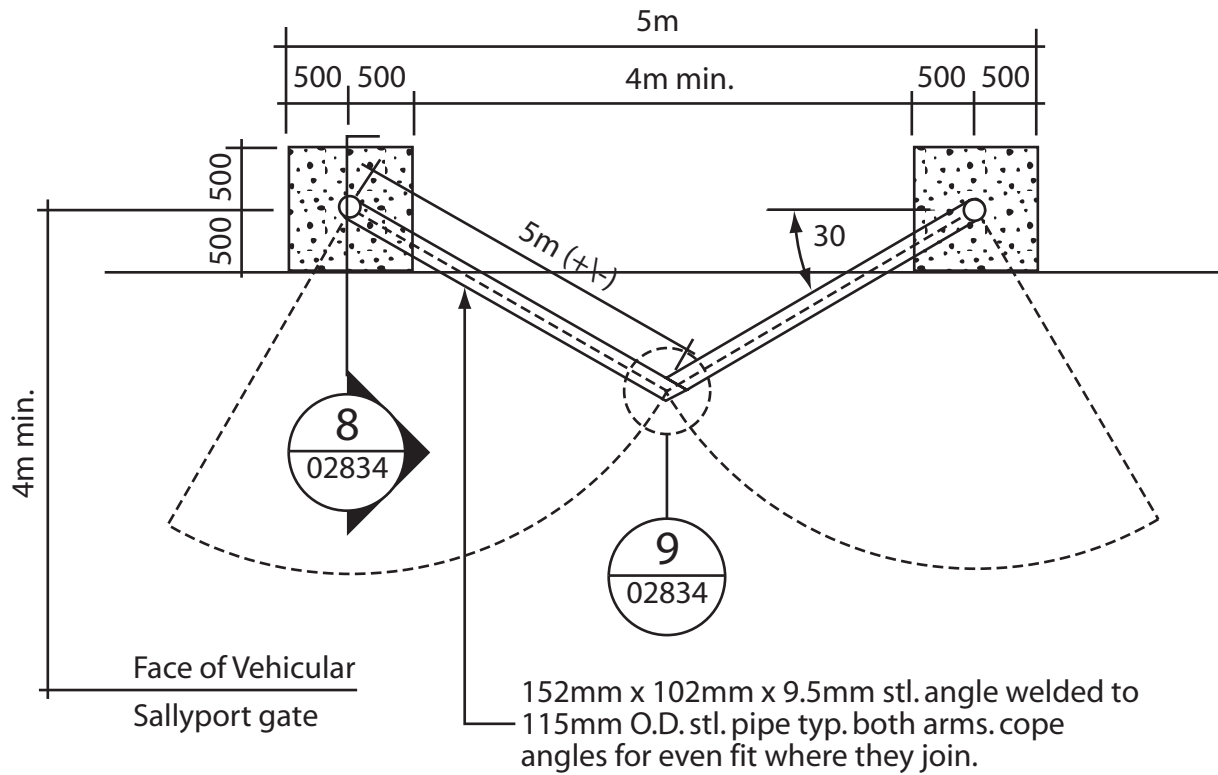


5
02834

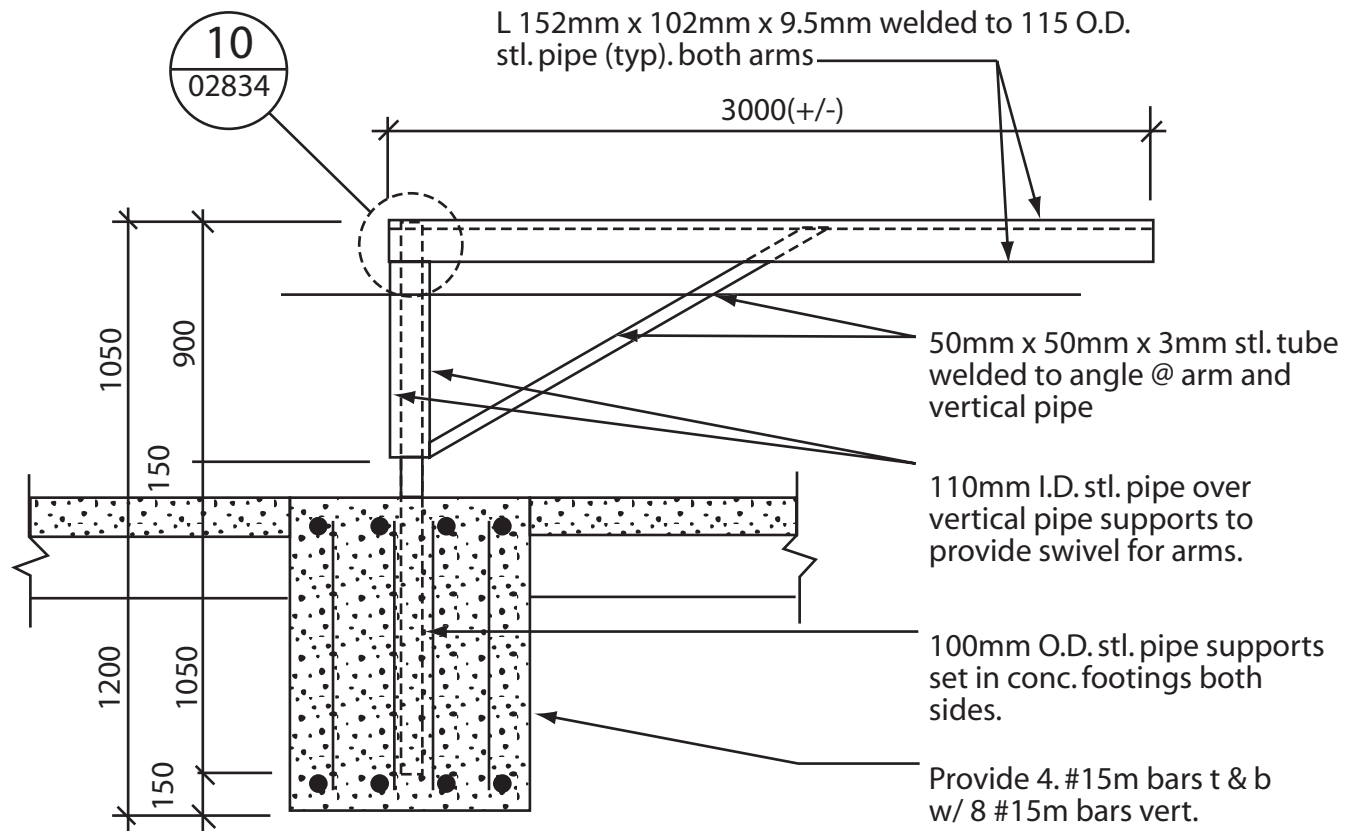
SLIDING VEHICLE GATE



6 TYPICAL FENCE SECTION -
02834 VEHICULAR SALLYPORT

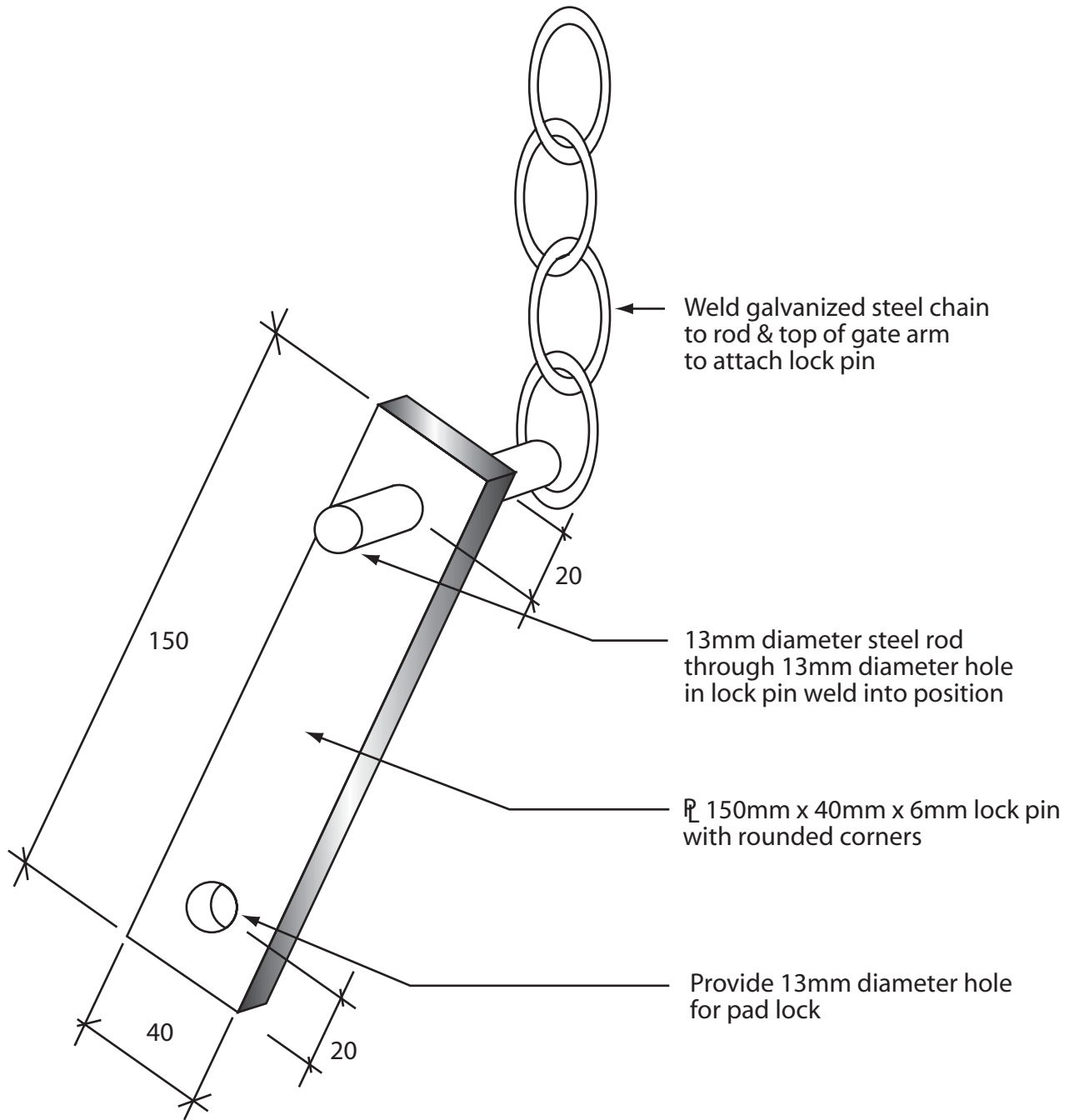


 **ANTI-CRASH GATE PLAN**



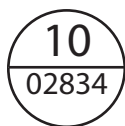
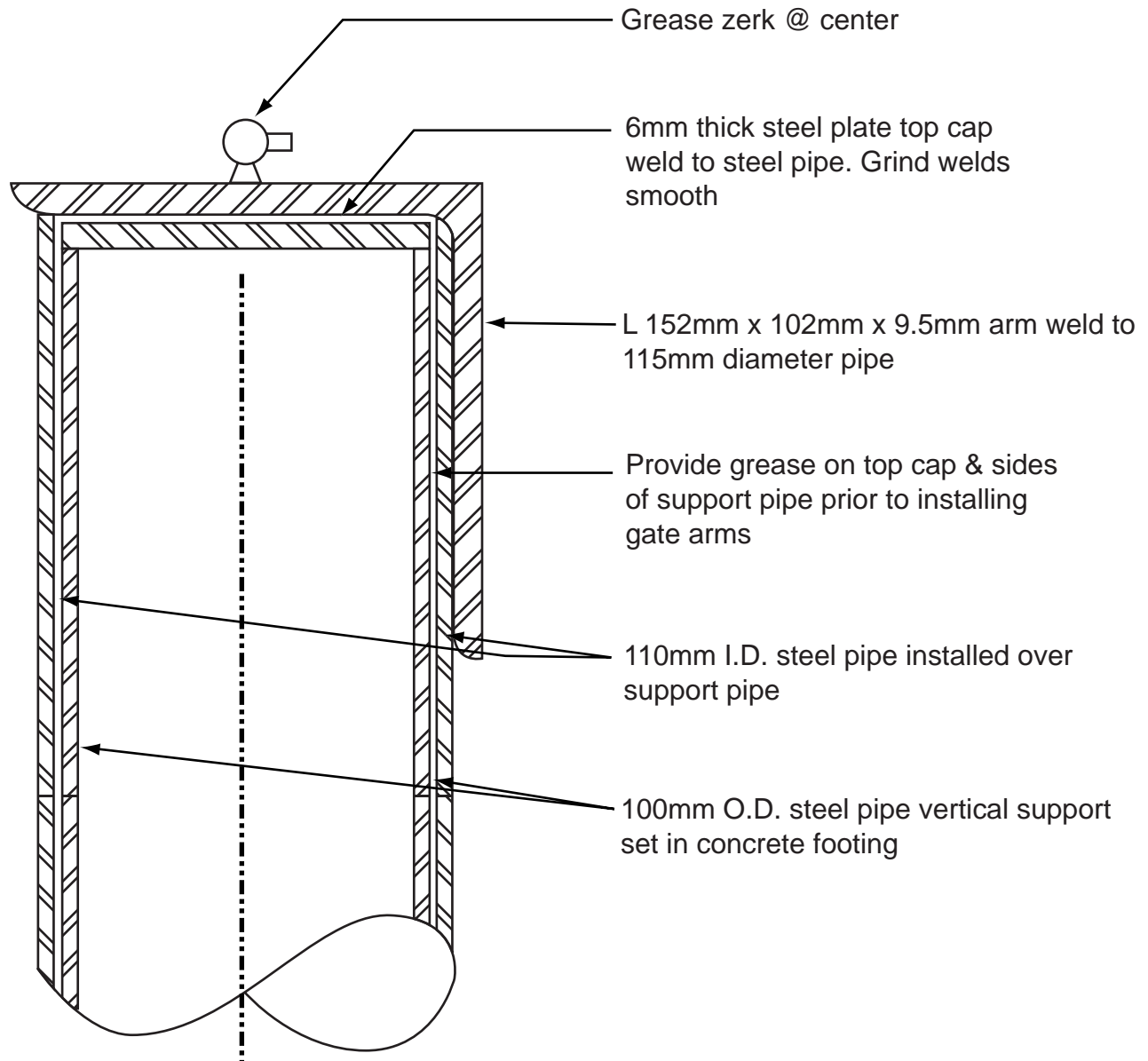
8
02834

ANTI-CRASH GATE DETAIL

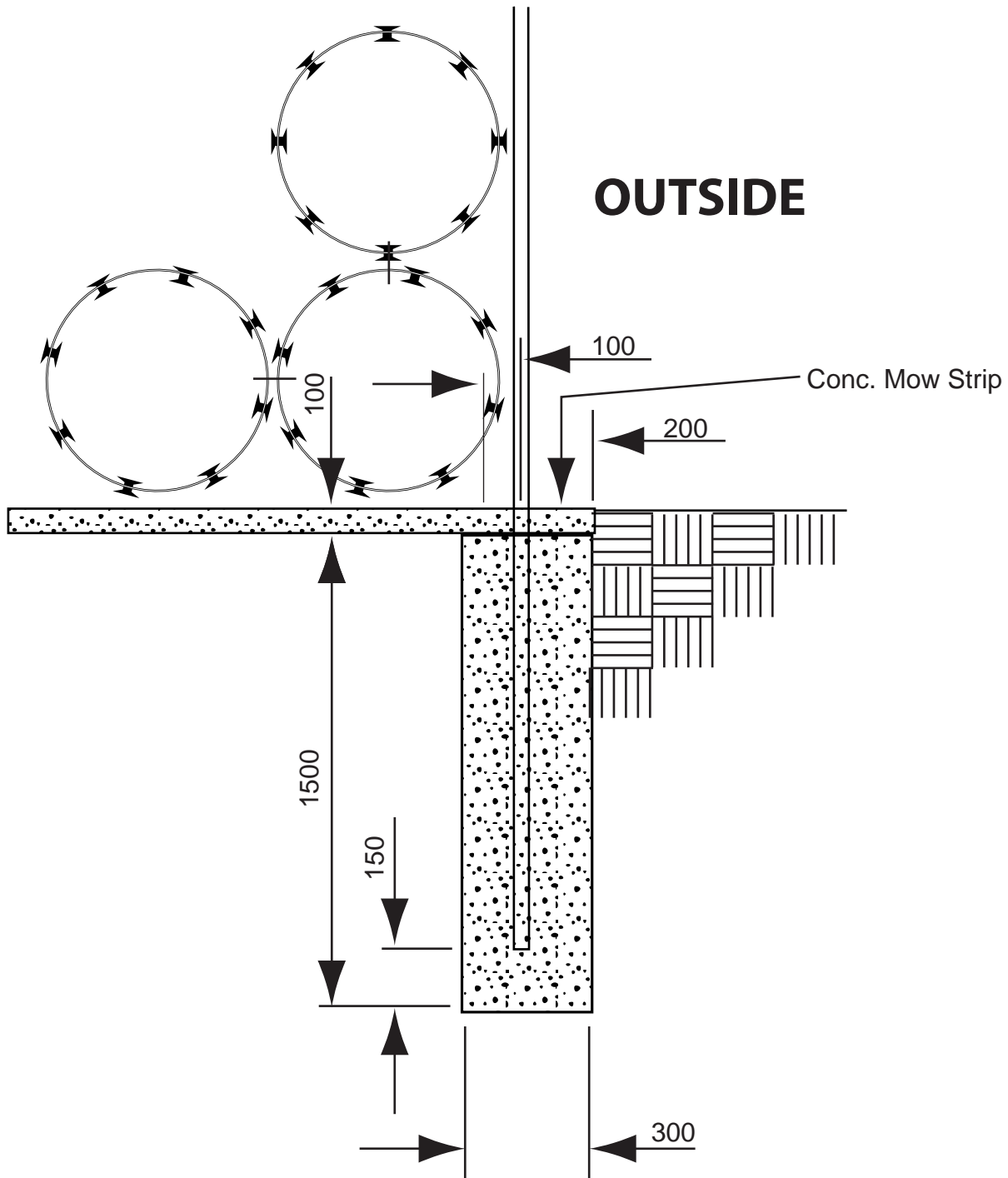


9
02834

LOCK PIN DETAIL

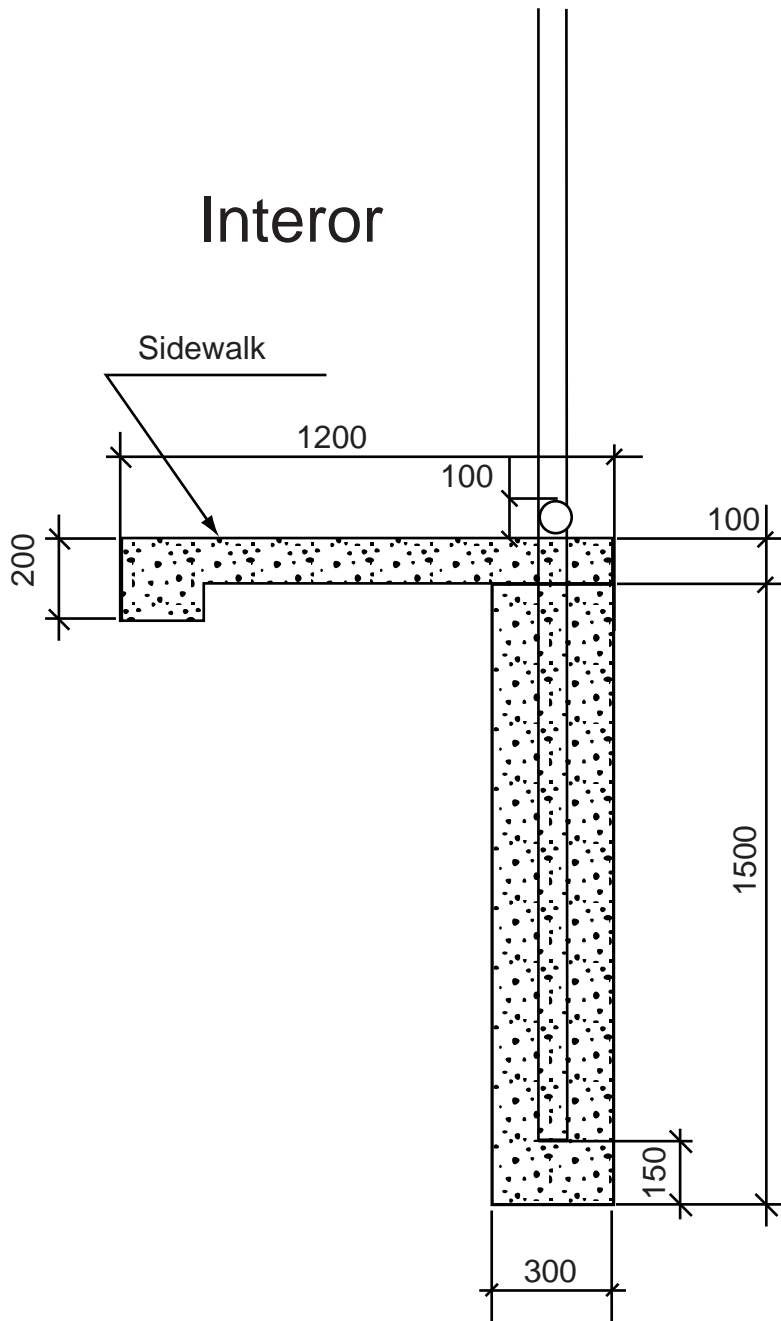


GATE ARM MOUNTING DETAIL



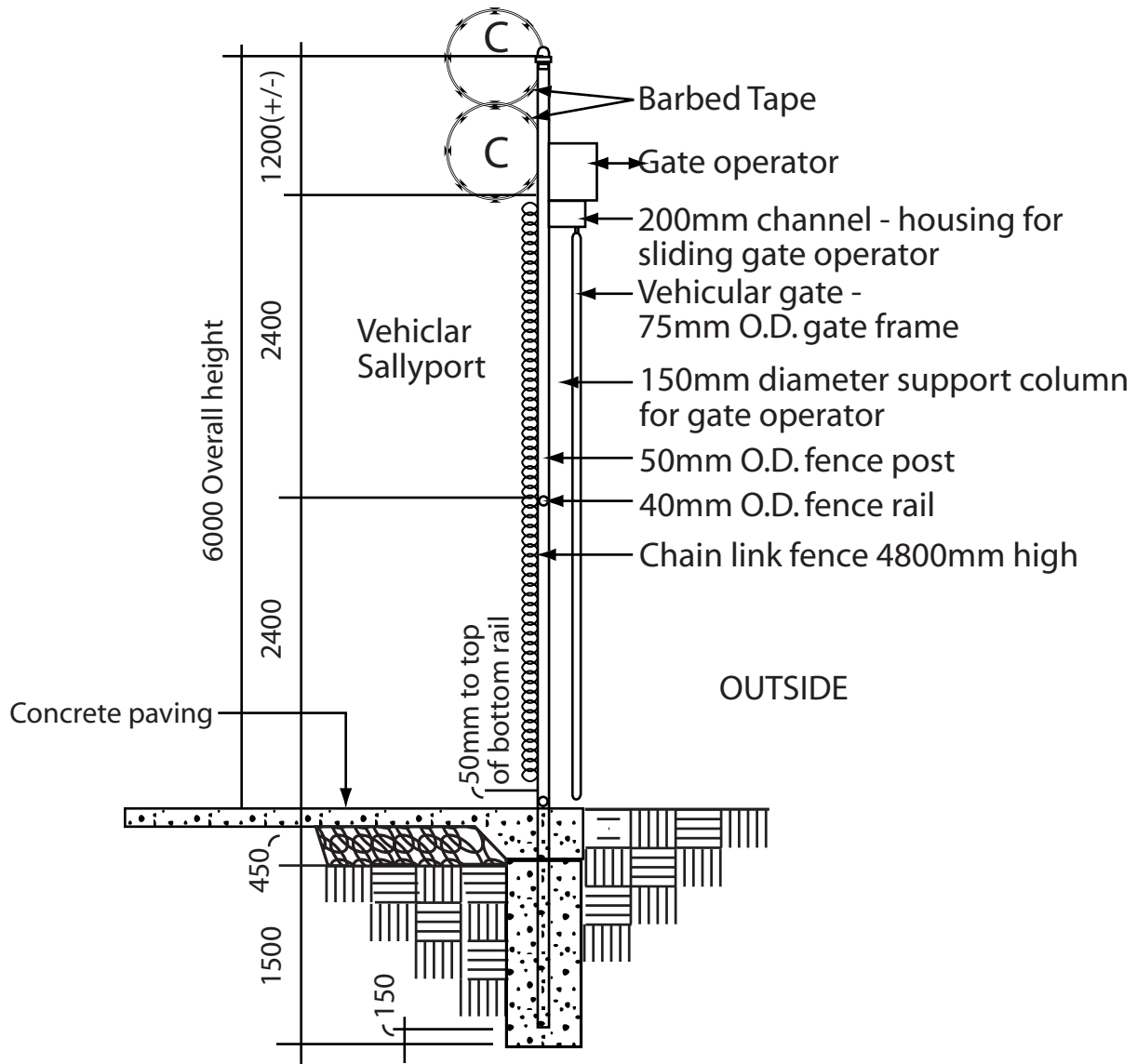
11
02834

TYPICAL EXTERIOR FOUNDATION PERIMETER SECURITY FENCE



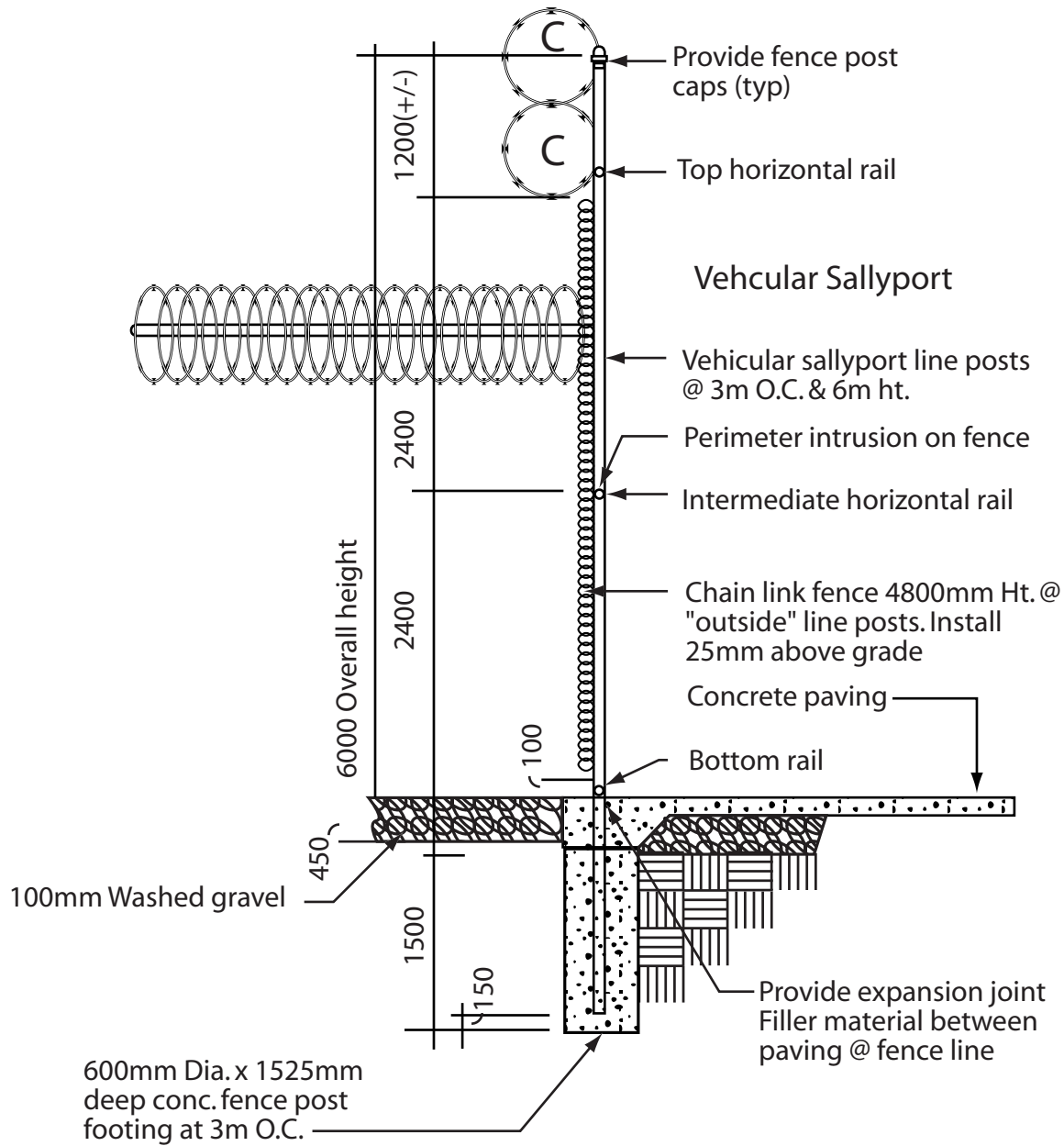
12
02834

TYPICAL INTERIOR FOUNDATION PERIMETER SECURITY FENCE



13
02834

TYPICAL FENCE SECTION -
VEHICULAR SALLYPORT



14
02834

TYPICAL FENCE SECTION - VEHICULAR SALLYPORT